

**STANDARD DEPARTURE  
CHART -  
INSTRUMENT  
(SID)**

TRANSITIONAL ALTITUDE  
**7000'**  
TRANSITIONAL LEVEL  
**ATC**

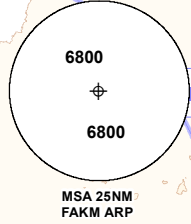
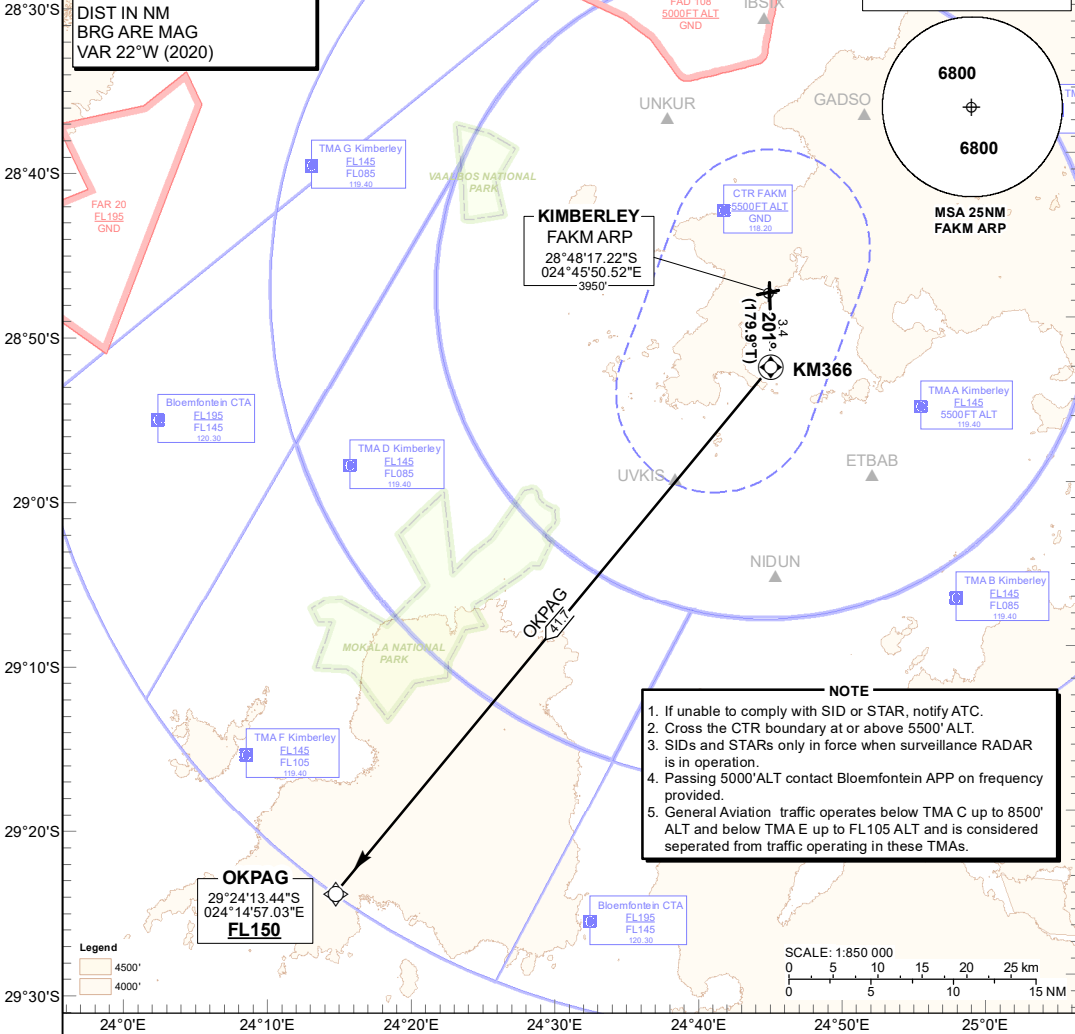
KIMBERLEY TWR: 118.20  
APN: 122.65  
APP: 119.40  
BLOEMFONTEIN APP: 124.30

**KIMBERLEY  
RNAV (GNSS) RWY 20  
OKPAG 1B**



**RNAV 1 REQUIRED**

**ELEV, ALT & HGT IN FEET  
DIST IN NM  
BRG ARE MAG  
VAR 22°W (2020)**



**KIMBERLEY  
FAKM ARP**  
28°48'17.22"S  
024°45'50.52"E  
3950'

- NOTE**
1. If unable to comply with SID or STAR, notify ATC.
  2. Cross the CTR boundary at or above 5500' ALT.
  3. SIDs and STARs only in force when surveillance RADAR is in operation.
  4. Passing 5000'ALT contact Bloemfontein APP on frequency provided.
  5. General Aviation traffic operates below TMA C up to 8500' ALT and below TMA E up to FL105 ALT and is considered separated from traffic operating in these TMAs.

**CHANGE: NEW Procedure**

**OKPAG 1B:  
RWY 20**

**Climb to FL150. Maintain RWY track 201°M to KM366. At KM366 turn right direct to OKPAG.**

**Restricted to a minimum climb gradient of 4.1% .**

- 4.1% @ 140KT IAS = 582 FPM
- 4.1% @ 160KT IAS = 665 FPM
- 4.1% @ 180KT IAS = 748 FPM
- 4.1% @ 200KT IAS = 831 FPM
- 4.1% @ 220KT IAS = 914 FPM

**COMMUNICATION FAILURE PROCEDURE (Squawk 7600)**

Comply with the OKPAG 1B RNAV (GNSS) SID. At OKPAG climb to flight plan level and set course as per flight plan.

Aircraft wishing to return to FAKM must continue as per the OKPAG 1B SID. At OKPAG turn right to IBKEL. At IBKEL comply with the IBKEL 1B RNAV (GNSS) STAR RWY 20 Communication Failure Procedure.